



G3-Model / PTO Driven Sprayer



OPERATION & SERVICE

MANUAL

Distributed by:

DAVIS & DAVIS DISTRIBUTORS

507 E. DINUBA AVE. / REEDLEY, CA 93654 / (559) 638-6546 / FAX (559) 638-9262

www.airofan.com

WARRANTY REGISTRATION

AIR-O-FAN PRODUCTS CORPORATION Sprayer Warranty Registration Form and Inspection Report

This form must be completed by the dealer and signed by both
the dealer and the customer at the time of the delivery.

CUSTOMER'S NAME _____

DEALER'S NAME _____

ADDRESS _____

ADDRESS _____

CITY, STATE _____

CITY, STATE _____

ZIP _____

ZIP _____

PHONE _____

PHONE _____

SERIAL NUMBER _____

DATE _____

DEALER INSPECTION REPORT

- | | |
|--|---|
| <input type="checkbox"/> All fittings and hoses free of leaks. | <input type="checkbox"/> Operate by-pass valve. |
| <input type="checkbox"/> All fasteners tight. | <input type="checkbox"/> Suction filter screen and gasket in place and clamped tight. |
| <input type="checkbox"/> Fans rotate freely. | <input type="checkbox"/> Line filter cap and plug tight. |
| <input type="checkbox"/> Agitator rotates freely. | <input type="checkbox"/> PTO Shaft Safety Shields are in place |
| <input type="checkbox"/> Lubricate machine. | |
| <input type="checkbox"/> All nozzles spraying properly. | |

SAFETY

- Guards and shields installed. All decals installed. Review operating and safety instructions.

I have thoroughly instructed the buyer on the above described equipment.
The review included the Operator's Manual content, equipment care, adjustments,
safe operation and applicable warranty policy.

DATE _____

DEALER'S SIGNATURE _____

The above Equipment and Operator's Manual have been
received by me and I have been thoroughly instructed as to care, adjustments,
safe operation and applicable warranty policy.

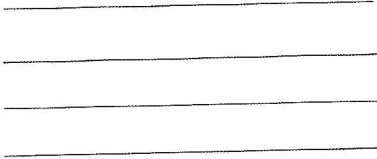
DATE _____

OWNER'S SIGNATURE _____



TEAR OUT, FOLD AND MAIL

PLACE
FIRST-CLASS
POSTAGE
HERE



Air-O-Fan Products Corporation
507 E. Dinuba Ave.
Reedley, CA 93654

FOLD, SEAL AND MAIL

TEAR OUT, FOLD AND MAIL

SAFETY ALERT SYMBOL

This Safety Alert symbol means:

**ATTENTION! BECOME ALERT!
YOUR SAFETY IS INVOLVED!**

The safety alert symbol identifies important safety messages in the manual. When you see this symbol, be alert to the possibility of personal injury or death. Follow the instructions in this safety message.



3 BIG REASONS WHY SAFETY IS IMPORTANT TO YOU!

- 1. Accidents disable and kill!**
- 2. Accidents cost!**
- 3. Accidents can be avoided!**

WARRANTY

This Air-O-Fan PTO Drive Sprayer Serial Number _____ is warranted, in so far as it is of Air-O-Fan Products Corporation manufacture, against defects in material and workmanship, under normal use and service, for a period of six months after date of purchase. The obligation under this warranty is limited to repairing or replacing, at the corporation's option without charge, F.O.B. factory, any part of Air-O-Fan Products Corporation manufacture which is proven to have been defective at the time it was shipped, provided immediate written notice is given Air-O-Fan Products Corporation upon discovery of such defect. The corporation shall have the option of requiring the return of the defective material, transportation prepaid, to establish the claim.

Air-O-Fan Products Corporation will not be responsible for labor charges, loss or damage as the result of any defective part. Nor will it make an allowance for labor, transportation or other charges incurred in the replacement or repair of such part. All purchased equipment manufactured by other manufacturers and incorporated into PTO Drive Sprayers by Air-O-Fan Products Corporation, including pumps, gearboxes, PTO shafts, and accessories will not allow any bills for the service, labor or other expenses that have not been previously authorized by them. Parts discovered defective within original manufacturer's warranty must be submitted to an Air-O-Fan Products Corporation agent, charges prepaid, and agent in turn will submit a warranty claim and defective parts direct to Air-O-Fan Products Corporation for processing and credit from original manufacturer.

USE WARRANTY

Air-O-Fan Products Corporation makes no guarantee, warranty or other representation as to the effect of applying materials with this sprayer. The buyer agrees that the manufacturer shall not be responsible or liable for injuries to crop, soil, person or property arising out of the use or handling of the sprayer, whether in accordance with the manufacturer's direction or not, or for damage to the sprayer by the use of corrosive or other materials, or operational conditions not controlled by manufacture, and accepts and uses the sprayer on these conditions.

PRE-STARTING CHECKS

CAUTION: Before pre-starting checks are performed, make sure tractor is not running.

1. Check pumps oil level on diaphragm pump model daily. Oil should be clean and not discolored.

NOTE: Refer to pump section of this manual for additional information.

2. Check gearbox oil level daily. Check main housing sight gauge and extension housing sight gauge.
3. Grease front agitator bushing and rear agitator packing gland 1–2 times daily, depending on usage. Inspect bushing and gland for leaks. Inspect agitator belt and idler pulley.
4. Inspect PTO shaft shields. Make sure shielding is properly installed onto the PTO shaft.
5. Inspect PTO shaft tubing length. Make sure there is 6–8 inches of travel.
6. Grease PTO shaft daily.

NOTE: Refer to PTO section in this manual for additional information.

7. Grease front input shaft bearings on centrifugal pump model daily. Rotate shaft to completely fill bearing housing with grease. Grease should purge onto the input shaft when properly greased.
8. Check pump belt on centrifugal pump model sprayers. Make sure belt and pulley guard are in place.
9. Clean the suction filter screen. Make sure suction filter gasket is installed properly and check for leaks. Close the shut-off valve located before the filter to avoid chemical loss while inspecting the suction filter screen and gasket.

NOTE: Make sure the shut-off valve is re-opened before operation.

10. Clean delivery line strainer screens daily.
11. Grease swivel hitch on 2–point turning hitch models daily. Grease hitch bearing and dirt shields daily.

OPERATION

CAUTION: TRACTOR MUST NOT BE RUNNING WHILE SHIFTING GEARBOX LEVER!

1. Perform all pre-starting checks outlined in the previous section of this manual.
2. Make sure shifting lever of the gearbox is in low or high gear. To shift lever, rotate the driveline by hand until the shift lever clicks into desired position. Rotate the bottom of the lever toward the tank for high, away from the tank for low.

NOTE: To avoid damage and possible injury, never shift the gearbox lever while tractor is running and PTO is engaged.

3. Adjust the nozzle vanes in the fan housing to maximize performance and reduce over spray and chemical waste.
4. Start filling the sprayer's supply tank with water. After supply tank becomes half full of water, engage PTO of tractor at idle speed. With centrifugal pump model sprayers, bleed air from pump to prime. Once the pump is primed and bypass valve is open, add chemical to the tank mixing screen. For certain powder chemicals you may want to increase your RPM for greater agitation. Close bypass valve, supply tank lid, and latch after mixing and filling of supply tank are finished.

IMPORTANT: Always wear proper safety equipment to protect against exposure. Comply with your county and state regulations at all times.

NOTE: Avoid running centrifugal pump model sprayers without water or priming. Damage to the pump seal will accrue if pump is dry while operating.

5. Increase the RPM to desired speed, not to exceed 540. Maximum performance of the sprayer is designed to operate at 540 PTO speed.
6. Open delivery valves and set pump pressure.
7. Make sure nozzles are not plugged and vanes are adjusted properly.

MACHINE SETTINGS

1. CHEMICAL DELIVERY

To open delivery valves, pull left and right control levers to the open position (toward the sprayer). The delivery valve in the open position will allow fluid to travel under pressure to the spray manifold located on the fan housing. Fluid continues under pressure through the adjustable vane and out the spray nozzles.

NOTE 1: Chemical calibrations may vary due to plugged or worn nozzles. Inspect all nozzles in the open position to insure spray pattern is not deformed.

NOTE 2: Chemical pressure may vary due to a suction leak; belt slippage or variations of engine RPM's. Keep the bypass valve in the closed position. Keep suction and discharge filter screens clean and make sure gaskets are replaced if necessary.

2. ADJUSTABLE VANE SETTING

Adjustable vanes, located in the fan housing, are designed to allow the operator to fine tune the air and chemical discharge to assure the best possible coverage in varying tree heights and configurations. To adjust, simply push up or down to desired location.

NOTE: Do not apply maximum force when adjusting the vane. If vane is tight, loosen the vane bolt in the housing.

TROUBLESHOOTING

If you have a problem or question not covered in this section, please call your Air-O-Fan Dealer. Before you call, please have this operator's manual and the serial number from your machine ready for reference.

NO SPRAY SOLUTION COMES THROUGH THE NOZZLES

Possible Cause: Tank is empty, suction valve is closed. Suction strainer is plugged. Delivery strainers are plugged. Pump drive belt is slipping (centrifugal pump models). Pump has not primed (centrifugal pump models).

INSUFFICIENT SPRAY SOLUTION FROM NOZZLES

Possible Cause: Bypass valve is open. Strainers are plugged. Plumbing is plugged. Suction filter gasket leaking. Nozzles are plugged.

PRESSURE DROPS RAPIDLY WHEN VALVES ARE OPEN

Possible Cause: Pump belt slips, collapsed suction line between the suction strainer and pump. Nozzle calibration exceeds pump volume.

VIBRATION COMING FROM REAR OF SPRAYER

Possible Cause: Clean fan, check PTO shaft U-joints and clutch for grease and wear. Check driveline U-joints and run-down clutch for grease and wear.

AGITATOR LEAKS

Possible Cause: Tighten packing sleeve nuts on rear of packing gland. Check shaft for wear, if all else fails replace seal kit.

CENTRIFUGAL PUMP SERVICE

MECHANICAL SEAL LUBRICATION: The pump is provided with an oil chamber which lubricates the seal face of the mechanical seal. The oil level should be checked every 40 hours. Fill cavity through the oil cup with SAE 30 oil (A).

BEARING LUBRICATION: Grease the bearing cavity through a grease zerk at the top of the output shaft housing. Fill no more than half full with Dolium R or equivalent grease.

FREEZING: Care should be taken to prevent pump from freezing during cold weather. Three individual chambers must be drained. These chambers include the suction (seal bracket) and the first and second stage impeller chambers.

FAN & AGITATOR MAINTENANCE

THE FAN MUST BE KEPT CLEAN TO PREVENT DAMAGE TO THE SPRAYER.

- A. **CLEAN FAN DAILY!** Keep fan clean of chemical buildup and dirt.
- B. **CLEAN THE FAN GUARD DAILY.** Leaves and other debris will cause a reduction in the sprayer's performance.
- C. **CLEAN ADJUSTABLE VANES DAILY.** Dirt and chemical buildup on the adjustable vane will decrease the performance and the air pattern of the sprayer.
- D. **IF VIBRATION OCCURS, SHUT DOWN SPRAYER.** Inspect fan blades and hub for dirt and chemical buildup. Clean fan, if vibration continues contact your Air-O-fan dealer for service.

NOTE: A dirty or worn fan can cause vibration. Worn bearings or improper service of the gearbox, drive shaft U-joints and PTO shaft U-joints may also contribute to vibration. Sustained periods of vibration can cause serious damage to the sprayer. If cleaning and proper service does not remedy the vibration, contact your Air-O-Fan dealer immediately for service.

- E. Notice the fan is installed on the power shaft of the gearbox with a tapered bushing from the factory. If the fan moves on the shaft, discontinue use of the sprayer and contact your Air-O-Fan dealer immediately.

NOTE: Replacing the fan or bushing on the shaft is warranted only when installed by a trained, authorized Air-O-Fan dealer.

GREASE FRONT AGITATOR BUSHING AND REAR PACKING GLAND TWICE DAILY.

- A. Grease front brass bushing twice daily.
- B. Grease rear packing gland twice daily.
- C. Inspect agitator belt and idler pulley.

WINTERIZING

1. Rinse supply tank with clean water and empty tank completely. (Sprayer supply tank should be dry until used again).
2. Remove suction filter screens and delivery line strainer screens to totally drain water from plumbing.
3. Disconnect pressure line hoses on plumbing tree and rear spray manifolds.
4. Tilt adjustable vanes in fan house downward with nozzle valves open.
5. Clean tank air vent.
6. Open pet cock on pump housing. (Centrifugal pump models)
7. Store in dry environment.
8. Severe weather areas may require additional attention. (contact your local dealer)

DIAPHRAGM PUMP OPERATION & SERVICE

Comet high pressure diaphragm pumps are standard equipment on both the Predator and SR11 500HP model sprayers. The diaphragm pump can be used in both concentrate and dilute applications. A regulator assembly controls the pump operating pressure for a variety of calibrations. The increase of pump pressure by adjusting the regulator will compensate for lower RPM settings. **ALWAYS** keep suction filter screen clean, which is located before the pump. Inspect lid gasket and tighten clamp with tee handle before pump operation. Always make sure to clean out valve before the filter is in the open position before pump operation. Pump and regulator service should be performed every 500 hours or annually. Oil change, diaphragm and check valve inspection, oil seal inspection and regulator seat and valve inspection should be performed. Drain pump-case of oil. Fill with SAE 30 wt. Motor oil. Rotate pump shaft by hand to eliminate air in the crankcase. Fill oil bowls for visual inspection. Always flush pump with clean water after operating. Some chemicals left in the pump can cause a reaction to the diaphragm material.

PTO SHAFT & DRIVELINE MAINTENANCE

CAUTION: To avoid possible injury, inspect and service PTO shaft and driveline only when tractor is not running.

1. **GREASE PTO SHAFT DAILY.**
2. **ALWAYS KEEP PTO SHAFT CLEAN AND PROPERLY GREASED.**
3. **INSPECT SAFETY SHIELDS DAILY.**
 - A. Always clean grease fittings before applying grease.
 - B. Always allow 6–7 inches of tubing travel to prevent damage to sprayer.
 - C. Always keep PTO shaft tubing clean and greased.

NOTE: ALWAYS ENGAGE YOUR TRACTOR PTO AT IDLE SPEED TO PREVENT DAMAGE TO THE SPRAYER.

- D. For sprayer models with a 2-point turning hitch and constant velocity PTO shaft, special attention should be given when servicing CV head portion of the shaft. A grease fitting is located at the CV head. Rotate shielding to locate grease fitting. **NOTE:** The CV Joint half of the PTO shaft should be connected to the sprayer (2-pt. Hitch only).

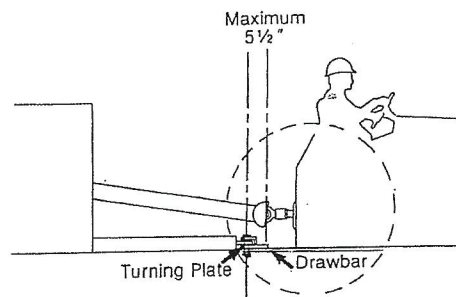
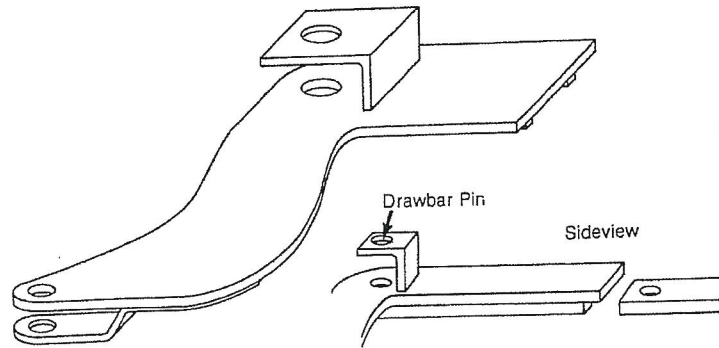
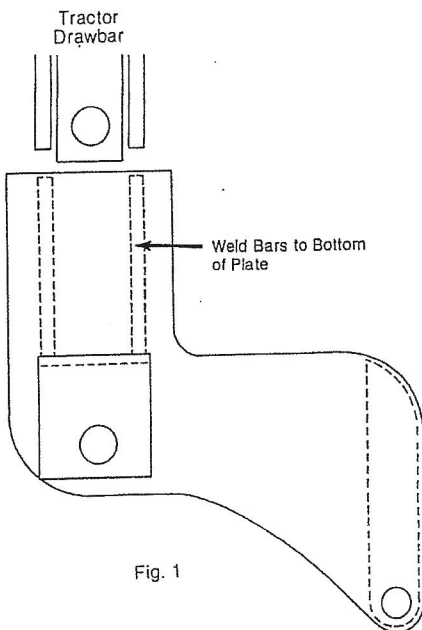
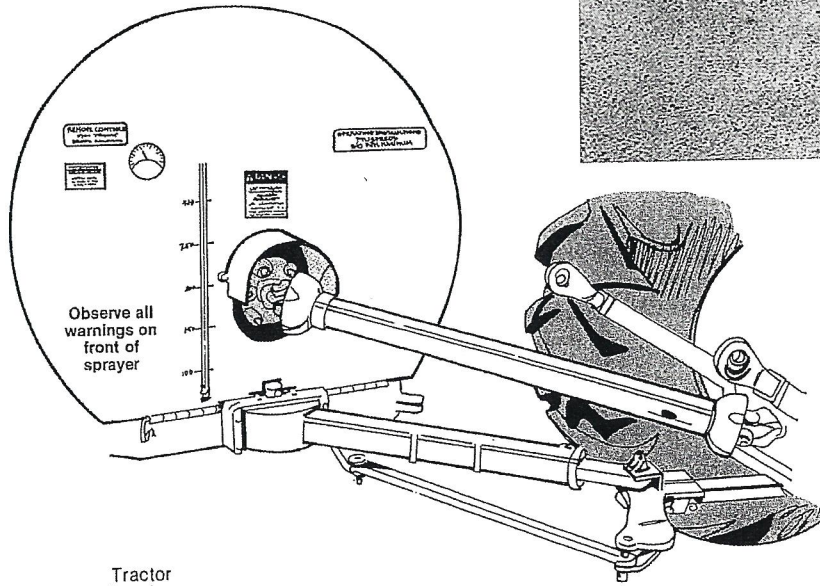
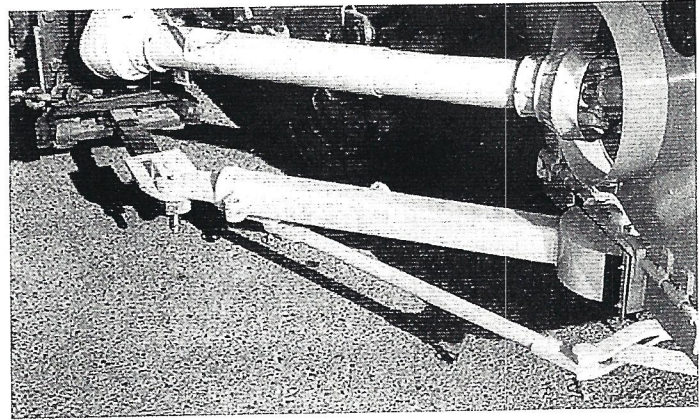
PTO SHAFT & DRIVELINE MAINTENANCE

1. **GREASE DRIVELINE U-JOINTS AND RUN-DOWN CLUTCH DAILY.**
 - A. Always clean grease fittings before applying grease.
 - B. Grease front and rear driveline U-joints daily.
 - C. Grease run-down clutch daily.

The driveline has a run-down clutch located on the front half of the driveline attaching to the pump. Its purpose is to allow the fan to freewheel when the PTO of the tractor is disengaged.

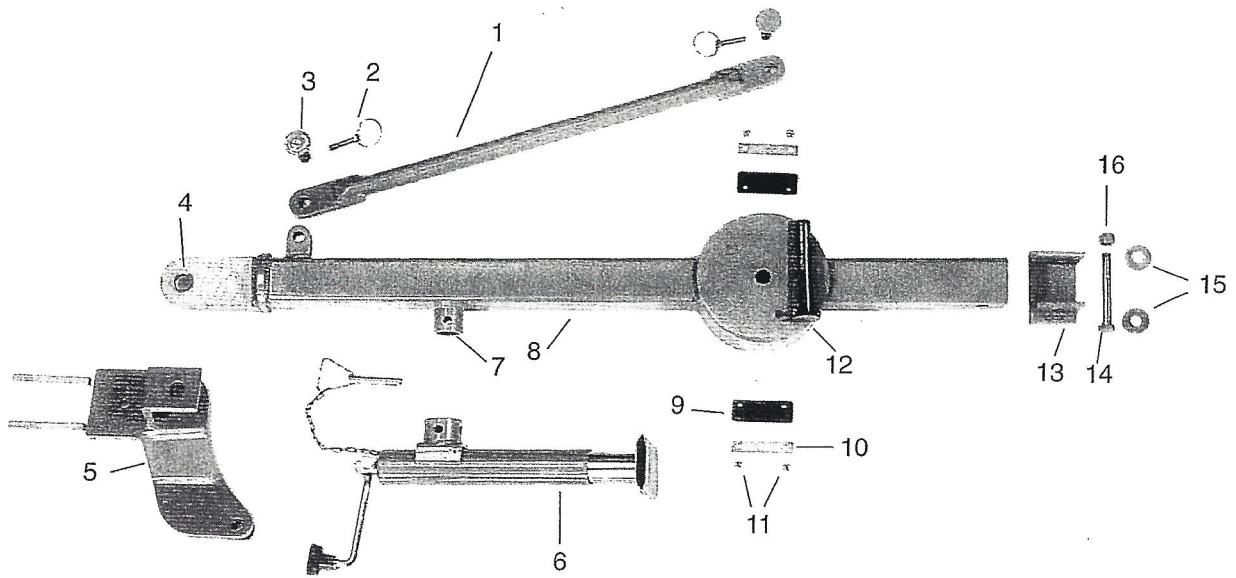
NOTE: Service of the driveline tubes should be performed annually. Clean and grease tubing. Driveline service can only be performed by removing the driveline from the sprayer.

D.K. TURNING HITCH



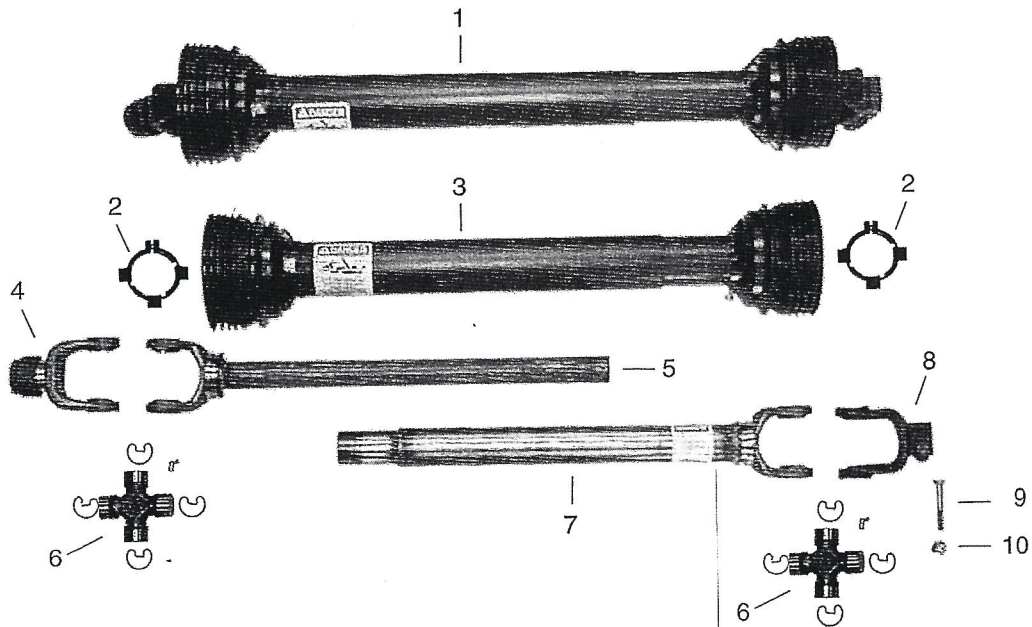
NOTE: When installing turning hitch plate for the first time, the drawing in Fig. 1 will explain itself. For further security of the hitch plate to the drawbar, drill a 5/8" hole in the plate just ahead of the drawbar pin hole. secure plate to the drawbar with a 5/8" bolt. This will hold the plate to the drawbar during travel over rough terrain.

DRAW BAR ASSEMBLY "DK TURNING HITCH"



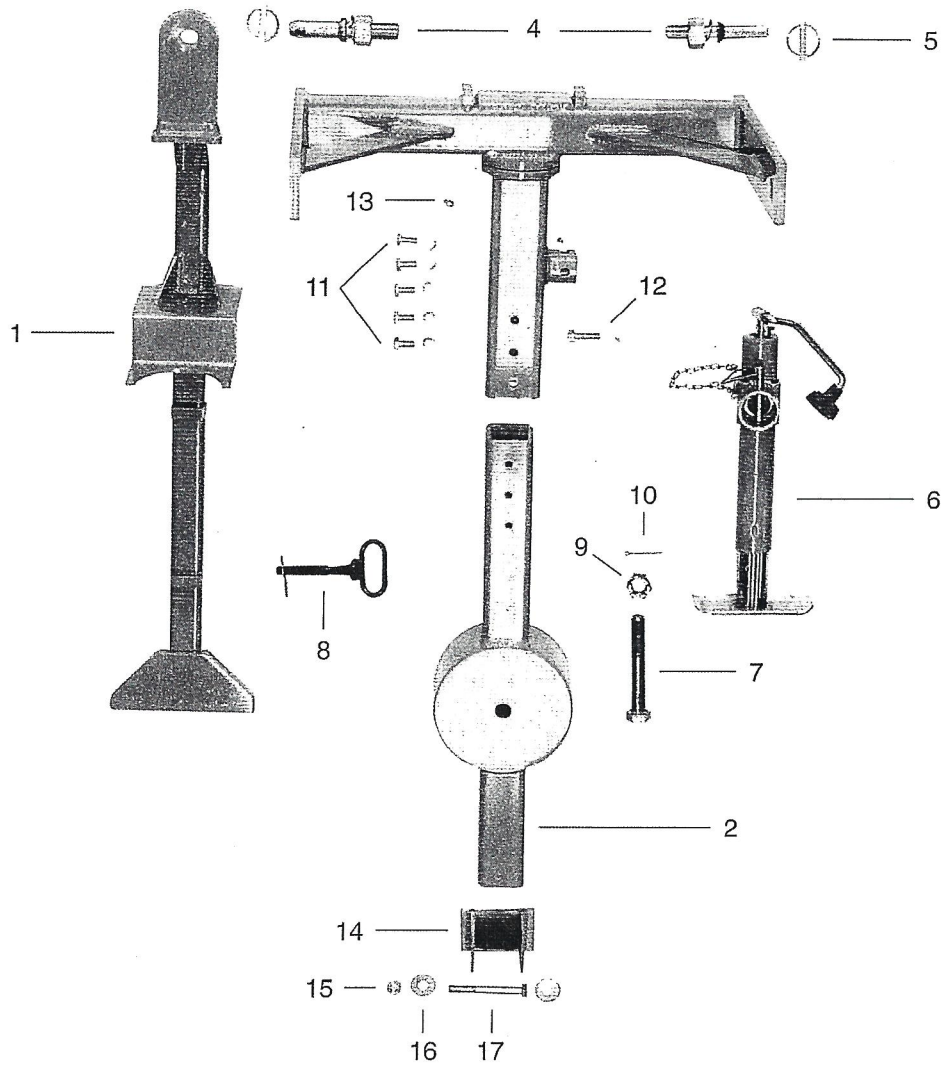
ITEM #	PART #	DESCRIPTION	QTY	ITEM #	PART #	DESCRIPTION	QTY
1	5000	RADIUS ROD	1	9	5008	DRAW BAR WIPER	2
2	5002	LYNCH PIN	2	10	5009	WIPER HOLD DOWN	2
3	5001	RADIUS ROD PIN	2	11	2204	1/4" NYLON LOCK NUT	4
4	212A	WELD ON HITCH LIP	1	12	5004	DRAW BAR PIN	1
5	3000	TURNING PLATE	1	13	4999	DRAW BAR SHOE	1
6	5046A	JACK ASSEMBLY	1	14	2345	BOLT 5/8" X 5"	1
7	5046B	JACK MOUNTING NIPPLE (weld-on)	1	15	2330	FLAT WASHER 5/8"	2
8	5003	DRAW BAR ASSEMBLY	1	16	2333	NUT NYLOCK 5/8"	1

WEASLER 55 SERIES PTO SHAFT (AIR-O-FAN "DK" HITCH MODEL)



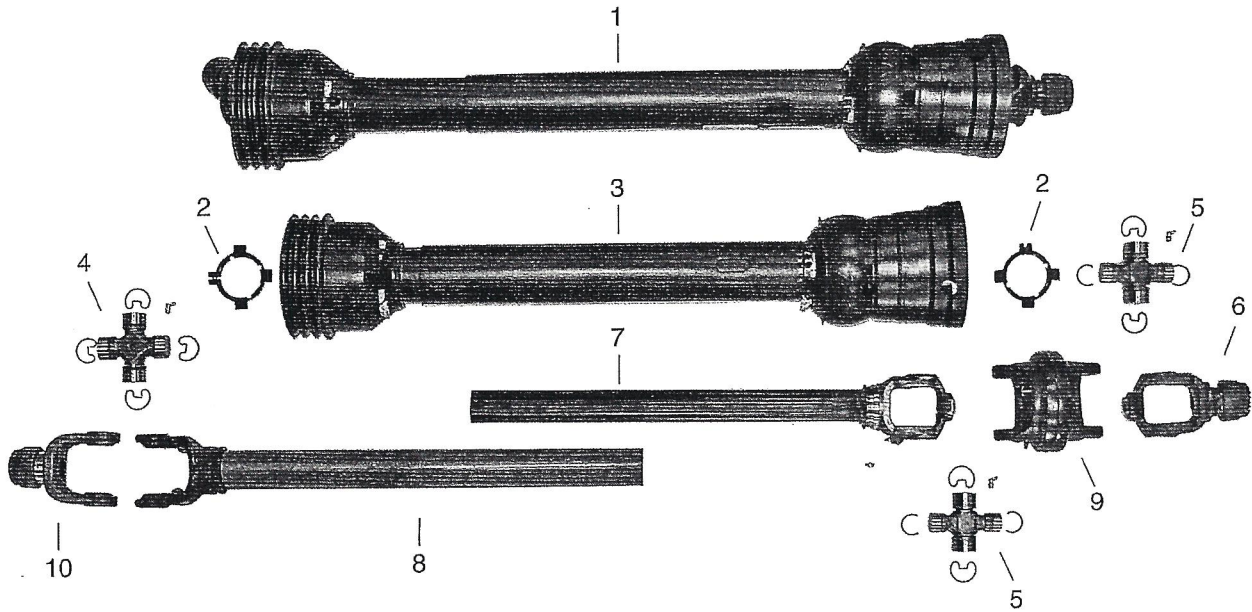
ITEM #	PART #	DESCRIPTION	QTY	ITEM #	PART #	DESCRIPTION	QTY
1	5675	COMPLETE PTO SHAFT	1	6	03-15307	CROSS KIT	2
2	19-15121	GUARD BEARING RETAINER KIT	2	7	98-23517	YOKE AND TUBE	1
3	90-23517	COMPLETE GUARD ASSEMBLY	1	8	55053-1000	SPLINED YOKE	1
4	55011-1000	QD YOKE	1	9	2305	1/2" NC X 3" GRADE 8 BOLT	1
5	99-23517	YOKE AND SPLINED SHAFT	1	10	2294	1/2" NC FLANGE NUT	1

2-POINT TURNING HITCH



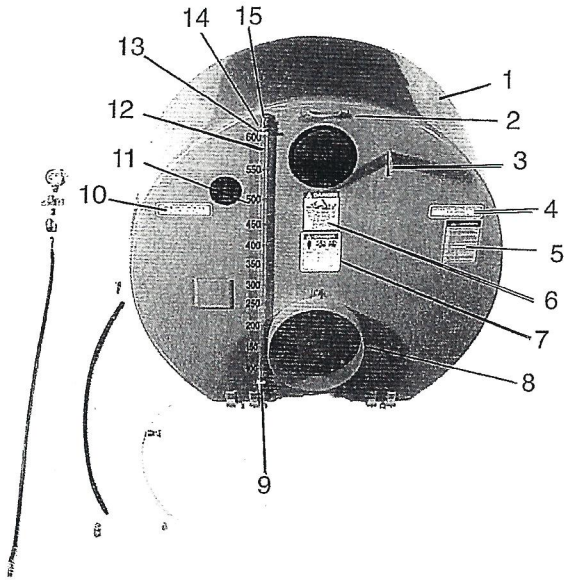
ITEM #	PART #	DESCRIPTION	QTY	ITEM #	PART #	DESCRIPTION	QTY
1	6597	TOW BAR	1	10	5879	SPLIT PIN	1
2	6498	DRAWBAR	1	11	2296	BOLT	5
3	6499	2-PT. PIVOT	1	12	2344	BOLT	1
4	6503	PIN	2	13	7735	GREASE ZERK	1
5	5004	CLICK PIN	2	14	4999	BRACKET	1
6	5046A	JACK	1	15	2333	NUT	1
7	2365	BOLT	1	16	2330	WASHER	2
8	6504	PIN / CLIP	1	17	2345	BOLT	1
9	5894	NUT	1				

WEASLER CONSTANT VELOCITY PTO SHAFT (2-POINT HITCH MODELS)



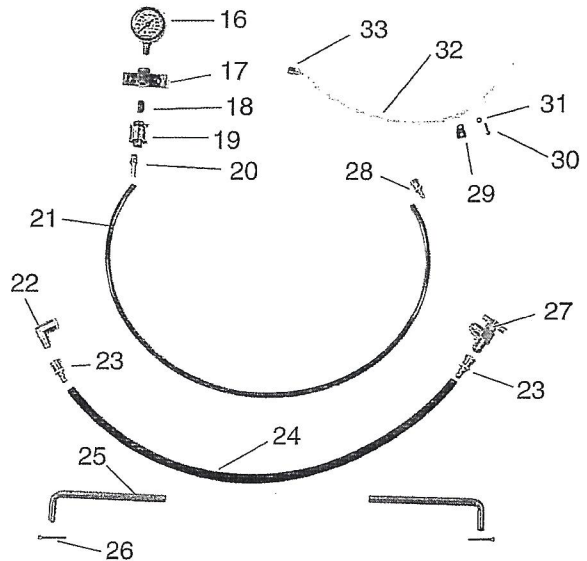
ITEM #	PART #	DESCRIPTION	QTY	ITEM #	PART #	DESCRIPTION	QTY
1	5676	COMPLETE PTO SHAFT	1	6	55011-1828	QD YOKE	1
2	19-15121	GUARD BEARING RETAINER	2	7	98-23329	INNER YOKE AND TUBE	1
3	90-23329	COMPLETE GUARD (INCL. BEARING RETAINERS)	1	8	99-23329	CV SIDE OUTER YOKE AND TUBE	1
4	03-15307	CROSS KIT	1	9	26-15143	CV BODY	1
5	03-15211	CV BODY CROSS KIT	2	10	55231-1812	CV JOINT, QD, YOKE	1

FRONT HOOD



ITEM #	PART #	DESCRIPTION	QTY
1	5015	FRONT HOOD	1
2	7054	GRAB HANDLE (weld-on)	1
3	5021	HOOD RELEASE LEVER	1
4	6048	DECAL, OPERATING INSTRUCTIONS	1
5	6062	DECAL, CAUTION READ OPERATORS MANUAL	1
6	6036	DECAL, CAUTION ROTATING DRIVELINE	1
7	6054	DECAL, DANGER TOXIC CHEMICALS	1
8	5018	CLUTCH GUARD	1
9	5032	SIGHT TUBE ELBOW (149F6-4)	1
10	6049	DECAL, REMOVE CONTROLS	1
11	6058 - 6059 - 6068	DECAL,CALIBRATION Specify Gallonage	1
12	5034	SIGHT TUBE 3/8" ID Specify Length	1
13	2479	SIGHT TUBE CLAMP	2
14	5033	HOSE FITTING (30882-6-6B)	2
15	6308	SIGHT TUBE ELBOW (149F6-2)	1

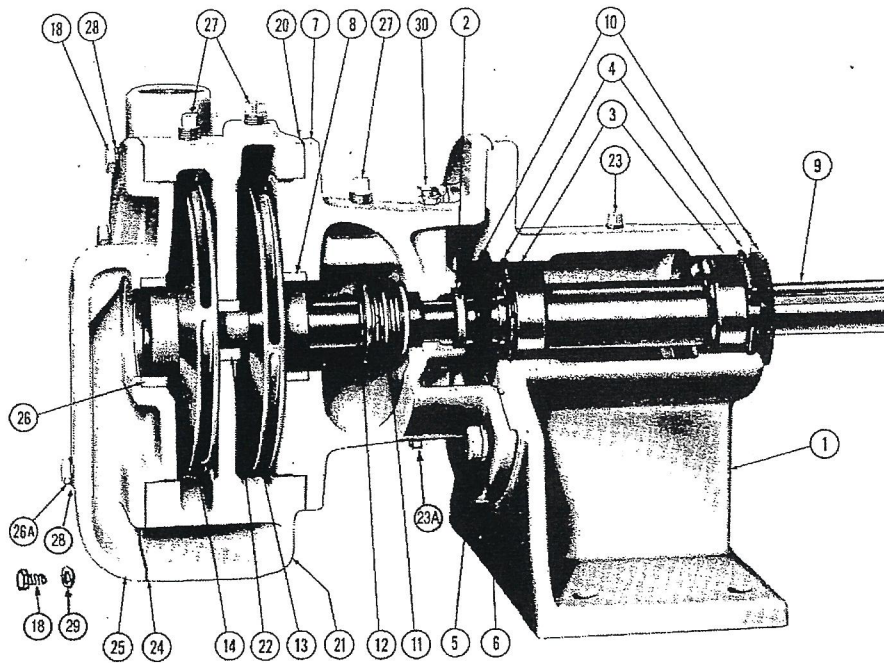
ITEM #	PART #	DESCRIPTION	QTY
16	5041	PRESSURE GAUGE 600 PSI	1
17	5039	GAUGE BRACKET	1
18	6304	NIPPLE, BRASS 1/4" X CL.	1
19	2031	GAUGE ISOLATOR	1
20	6307	HOSE FITTING 1/4" X 1/4" BRASS KING NIPPLE	1
21	5037	HOSE TO GAUGE 1/4" X 40"	1
22	5035	BRASS FITTING, 90° (150F-6-4)	1
23	5033	HOSE FITTING (30882-6-6B)	2
24	5042	3/8" X 29" BLACK PUSH LOCK HOSE TO FEED SIGHT TUBE FROM TANK	1
25	5017	HOOD PIN	2
26	5879	COTTER PIN	2
27	7195	SIGHT TUBE VALVE (NV101F-6-4)	1
28	5036	1/4" HOSE FITTING, SWIVEL (30682-4-4B)	1
29	2484	BREATHER TUBE HOLD DOWN CLAMP	1
30	2390	10/24" X 3/4" SCREW	1
31	2391	10/24" HEX NUT	1
32	2478	BREATHER TUBE	1
33	6309	HOSE FITTING (26-4-2)	1



COMET PUMP MODEL APS 141

NEW #	OLD #	DESCRIPTION	QTY	NEW #	OLD #	DESCRIPTION	QTY
1210019700	1210/197	O-RING	4	2803016800	2803/168	HOSE TAIL	1
1210035300	1210/353	O-RING	1	2811000900	2811/9	WASHER	20
1210036500	1210/365	O-RING	1	2811002500	2811/25	WASHER	40
1210036700	1210/367	O-RING	1	2813003000	2813/30	CONNECTING ROD WASHER	1
1210036900	1210/369	O-RING	1	2813007000	2813/70	CONNECTING ROD WASHER	1
1210037100	1210/371	O-RING	1	2826000500	2826/5	BALL VALVE	1
1210037300	1210/373	O-RING	2	2826000600	2826/6	BALL VALVE	1
1210038500	1210/385	O-RING	10	3009001400	3009/14	VALVE SEAT	10
1211001200	1211/12	HOSE TAIL CONNECTOR	1	3011000300	3011/3	PISTON ROD PIN	5
1214001600	1214/16	BALL VALVE	1	3020000600	3020/6	INNER SNAP RING	10
1214001700	1214/17	BALL VALVE	1	3020000700	3020/7	INNER SNAP RING	1
1219001800	1219/18	SAFETY VALVE	1	3200001900	3200/19	PLUG	1
1220003400	1220/34	VALVE ASSEMBLY	10	3202020300	3202/203	CAP	1
1800001200	1800/12	DIAPHRAGM	5	3202021800	3202/218	VALVE CAP	5
1802001500	1802/15	SPRING	10	3202021900	3202/219	VALVE CAP	5
2000007900	2000/79	NIPPLE	2	3218009900	3218/99	VALVE CHAMBER	5
2400006300	2400/63	MOUNTING FEET	2	3604000900	3604/9	VALVE PLATE	10
2404013900	2404/139	PLATE	2	3607002200	3607/22	SCREW	12
2409006800	2409/68	PISTON	5	3609000100	3609/1	SCREW	4
2419004200	2419/42	STUD BOLT	5	3609000900	3609/9	SCREW	37
2801005700	2801/57	ELBOW	1	3609005700	3609/57	SCREW	40
2802002000	2802/20	DELIVERY HOSE TAIL	2				

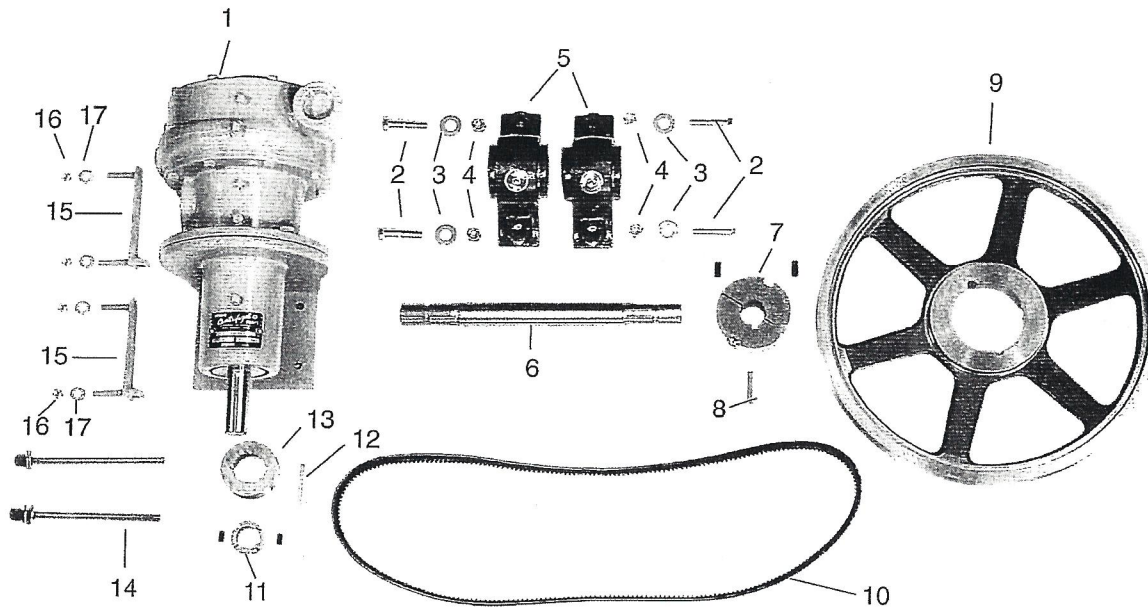
Meyers CENTRIFUGAL PUMP (OPTION)



ITEM #	PART #	DESCRIPTION	QTY	ITEM #	PART #	DESCRIPTION	QTY
1	7154	BRACKET, BEARING	1	*	7171	LOCKWASHER, 3/8"	1
2	7155	SEAL, OIL	1	18	7172	SCREW, CAP 3/8" - 16 UNC X 7/8"	16
3	7156	BEARING	2	20	7174	GASKET, PAPER	1
4	7157	RING, SNAP, BEARING RETAINER	2	21	7175	CASE, VOLUTE W/ WEARING RING	1
5	7158	SCREW, CAP 1/2" - 13 UNC X 1 1/4"	4	22	7176	RING, WEARING FOR VOLUTE CASE	1
6	7159	LOCK WASHER, 1/2"	4	23	7177	PLUG, PIPE 1/8"	5
7	7160	BRACKET, SEAL, W/ WEARING RING	1	23A	7178	PLUG, PIPE 1/4"	2
8	7161	RING, WEARING, FOR SEAL BRACKET	1	24	7179	GASKET, PAPER, BACKPLATE TO VOLUTE CASE	1
9	7162	SHAFT, PUMP	1	25	7180	BACKPLATE, W/ WEARING RING	1
10	7163	SLINGER	2	26	7181	RING, WEARING FOR BACKPLATE	1
11	7164	SEAL, SHAFT	1	26A	7182	SCREW, CAP 3/8" - 16 UNC X 2"	2
12	7165	RING, SNAP, SEAL RETAINER	1	27	7183	PLUG, PIPE 1/4"	12
13	7166	IMPELLER, INNER	1	28	7184	WASHER, SEAL FASTENER 3/8"	16
14	7167	IMPELLER, OUTER	1	29	7173	LOCKWASHER, 3/8"	2
*	7168	KEY, 3/16 X 3/16 X 2", FOR IMPELLERS	1	30	7185	CUP, OIL 1/8" NPT	1
*	7169	WASHER, IMPELLER RETAINER	1				
*	7170	SCREW, CAP 3/8" - 16 UNC X 1"	1				

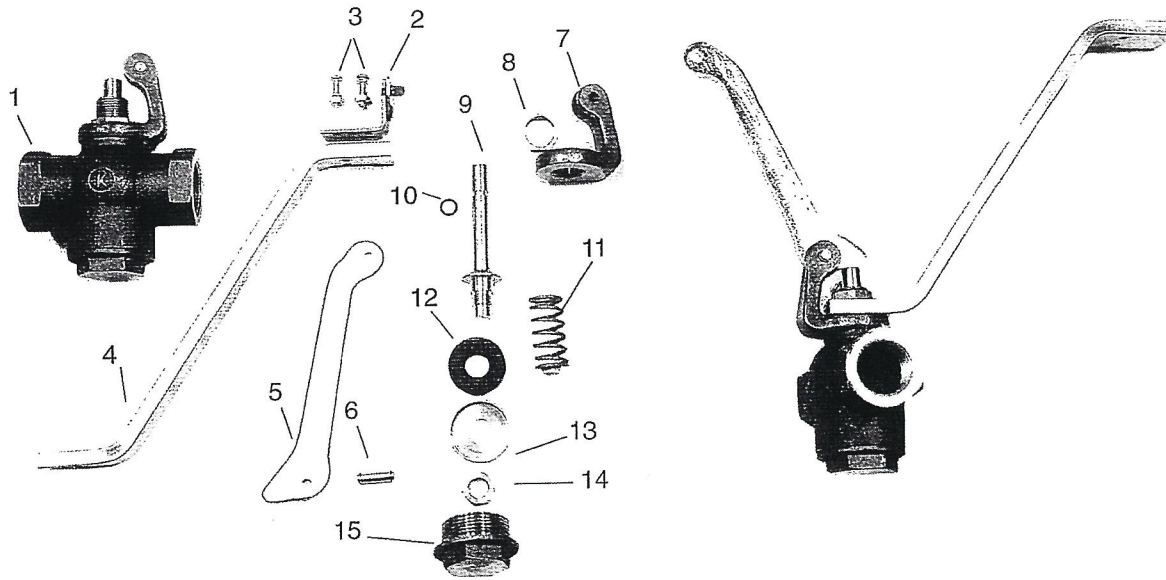
* Internal parts not visible

MYERS PUMP DRIVE ASSEMBLY



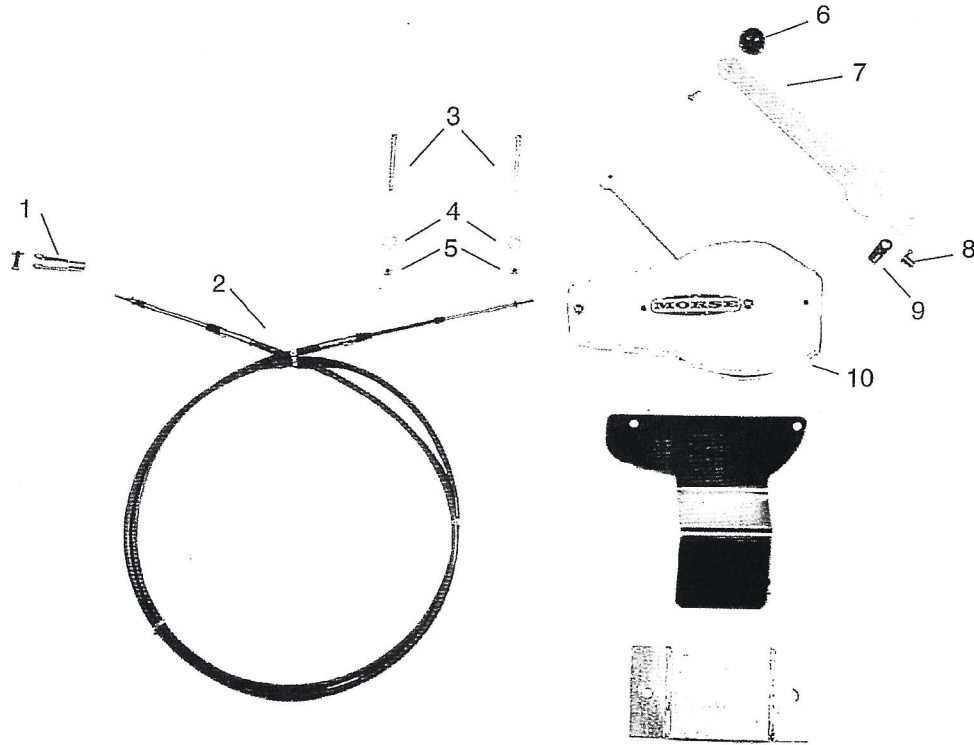
ITEM #	PART #	DESCRIPTION	QTY	ITEM #	PART #	DESCRIPTION	QTY
1	7146	CENTRIFUGAL PUMP, I2C95 MYERS	1	9	6122	3 GR 3V19.0 T.L. SHEAVE	1
2	2340	5/8" X 2 3/4" PLATED CAP SCREW	4	10	1327	3 GR 3VX670 BELT	1
3	2330	5/8" PLATED FLAT WASHER	4	11	6123	1210 X 1 1/4" T.L. BUSHING (INCLUDES 2 SET SCREWS)	1
4	2333	5/8" PLATED NYLON LOCK NUT	4	12	6123A	5/16" X 1 1/4" SQ. KEYSTOCK	1
5	6102	TYPE E 1 1/2" PILLOW BLOCK BEARING	2	13	6109	3 GR 3V 3.15 T.L. SHEAVE	1
6	6100	PTO JACK SHAFT 1 1/2" X 16" W/ 1 3/8" 6 SPLINE BOTH ENDS	1	14	6125	PUMP BELT TENSION BOLTS (MFG)	2
7	6121	3020 X 1 1/2" T.L. BUSHING (INCLUDES 2 SET SCREWS)	1	15	6124	PUMP BELT TENSION MOUNT PLATE	2
8	6121A	3/8" X 1 1/4" SQ. KEYSTOCK	1	16	2253	3/8" PLATED NYLON LOCK NUT	4
				17	2250	3/8" PLATED FLAT WASHER	4

Kingston VALVE ASSEMBLY



ITEM #	PART #	DESCRIPTION	QTY	ITEM #	PART #	DESCRIPTION	QTY
1	946	1" VALVE, KINGSTON	2	8	939	YOKE NUT	2
2	732	VALVE CABLE CLIP	2	9	940	STEM	2
3	2390	10-24 x 3/4" SCREW	4	10	941	O-RING	2
	2391	10-24 HEX NUT	4	11	930	SPRING	2
4	747	VALVE CABLE BRACKET	2	12	932	SEAT	2
5	922	VALVE HANDLE	2	13	943	SEAT HOUSING	2
6	938P	PIN, KINGSTON	2	14	942	STEM NUT	2
7	938	VALVE YOKE	2	15	945	BOTTOM PLUG	2

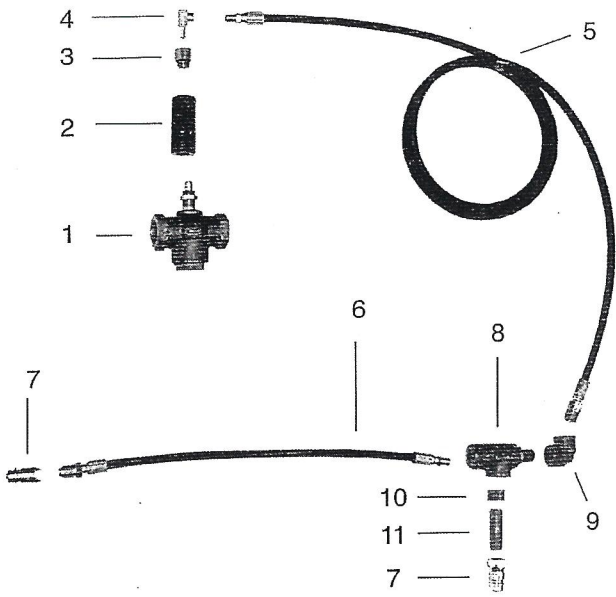
MORSE CONTROLS



ITEM #	PART #	DESCRIPTION	QTY
1	725	CLEVIS	2
2	723	CONTROL CABLE Specify Length	2
3	2212	BOLT 1/4" X 2 1/4"	2
4	2200	FLAT WASHER 1/4"	2
5	2203	NYLOCK NUT 1/4"	2
6	749R or 749B	KNOB (INCLUDES SCREW)	2
7	744	HANDLE	2

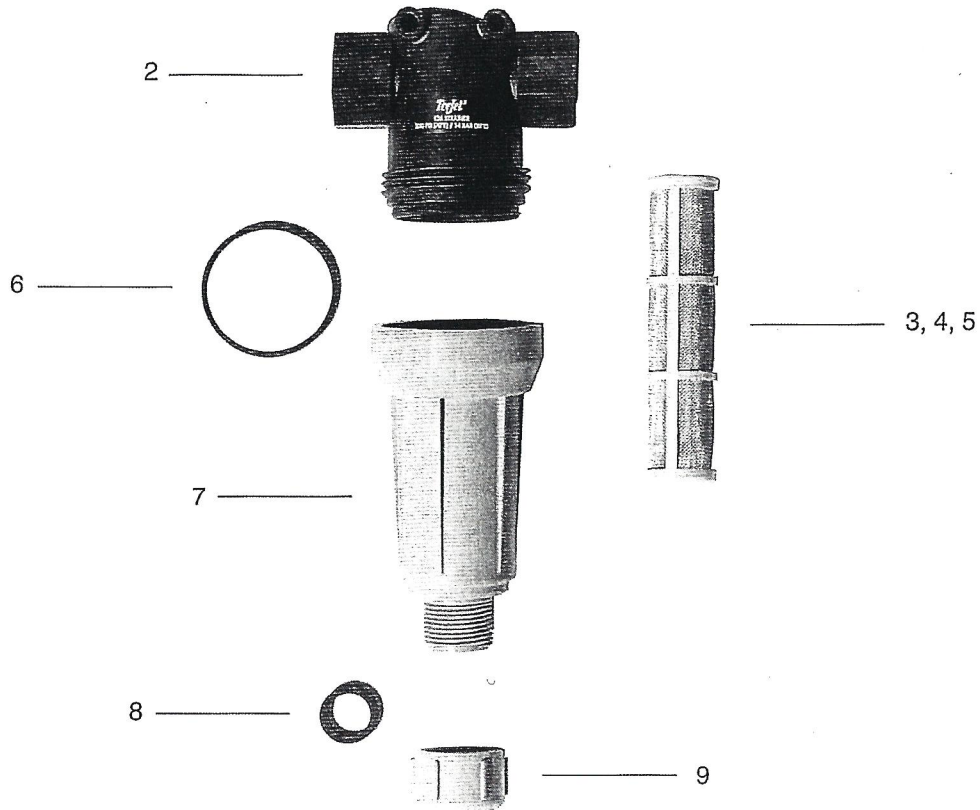
ITEM #	PART #	DESCRIPTION	QTY
8	743-2	FRICITION KIT, INCLUDES 2 EACH SPRINGS AND BRAKES	1
9	7036	CABLE CONNECTOR	2
10	742A	CONTROL BOX (2 lever)	1
11	741	CONTROL BOX MOUNTING PLATE	1
12	740	CONTROL BOX POCKET	1

AIR-O-FAN HYDRAULIC VALVE ASSEMBLY



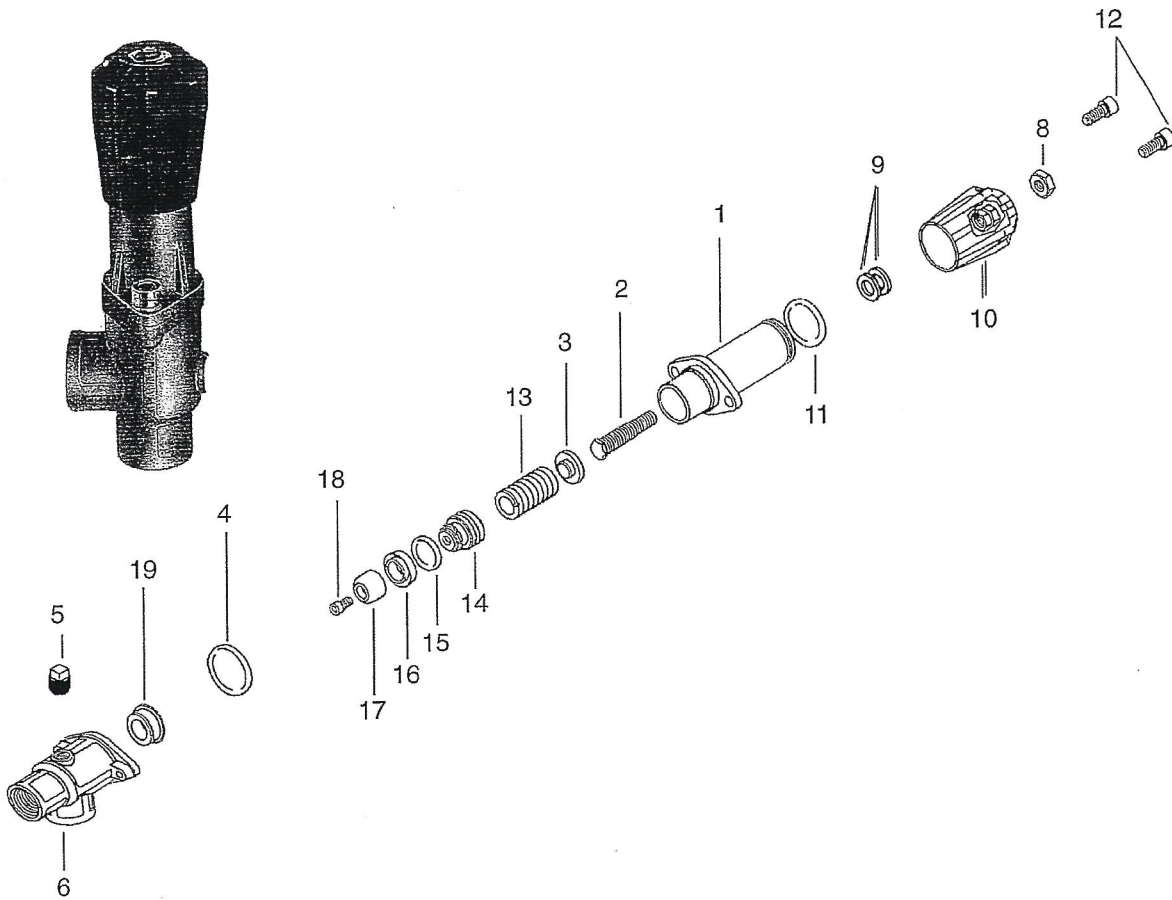
ITEM #	PART #	DESCRIPTION	QTY
1	946	1" KINGSTON VALVE ASSEMBLY	2
2	6160	HYDRAULIC ACTUATOR	2
2A	6161	HYDRAULIC ACTUATOR SEAL KIT (NOT PICTURED)	2
3	6162	HYDRAULIC ADPTER FITTING	2
4	6163	HYDRAULIC FITTING, 90° SWIVEL	2
5	6164	HYDRAULIC HOSE 1/4" x 96"	2
6	6165	HYDRAULIC HOSE 1/4" x 22"	2
7	6146	HYDRAULIC QUICK COUPLER, MALE	2
8	6166	HYDRAULIC VALVE	2
9	3086	ELBOW 1/2"	2
10	6167	RUBBER BUSHING	2
11	3087	PIPE NIPPLE 1/2" x 3"	2

DELIVERY LINE STRAINER ASSEMBLY (NEW STYLE, 2007) PART # 6350



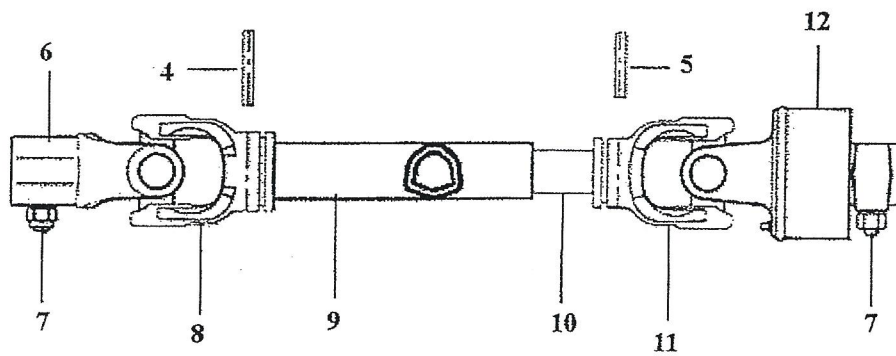
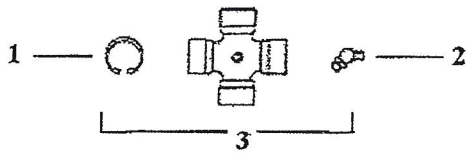
ITEM #	PART #	DESCRIPTION	QTY	ITEM #	PART #	DESCRIPTION	QTY
1	6350	1" STRAINER ASSEMBLY COMPLETE	1	6	6357	GASKER, VITON	1
2	6352	1" STRAINER HEAD, POLYPROPYLENE	1	7	6358	BOWL, POLYPROPYLENE	1
3	6354	SCREEN, 16 MESH (GREY)	1	8	6359	GASKET, VITON	1
4	6355	SCREEN, 30 MESH (YELLOW) STANDARD	1	9	6360	CAP, POLYPROPYLENE	1
5	6356	SCREEN, 50 MESH (RED)	1				

PRESSURE REGULATOR ASSEMBLY (USED ON COMET APS SERIES PUMPS) PART # 6200



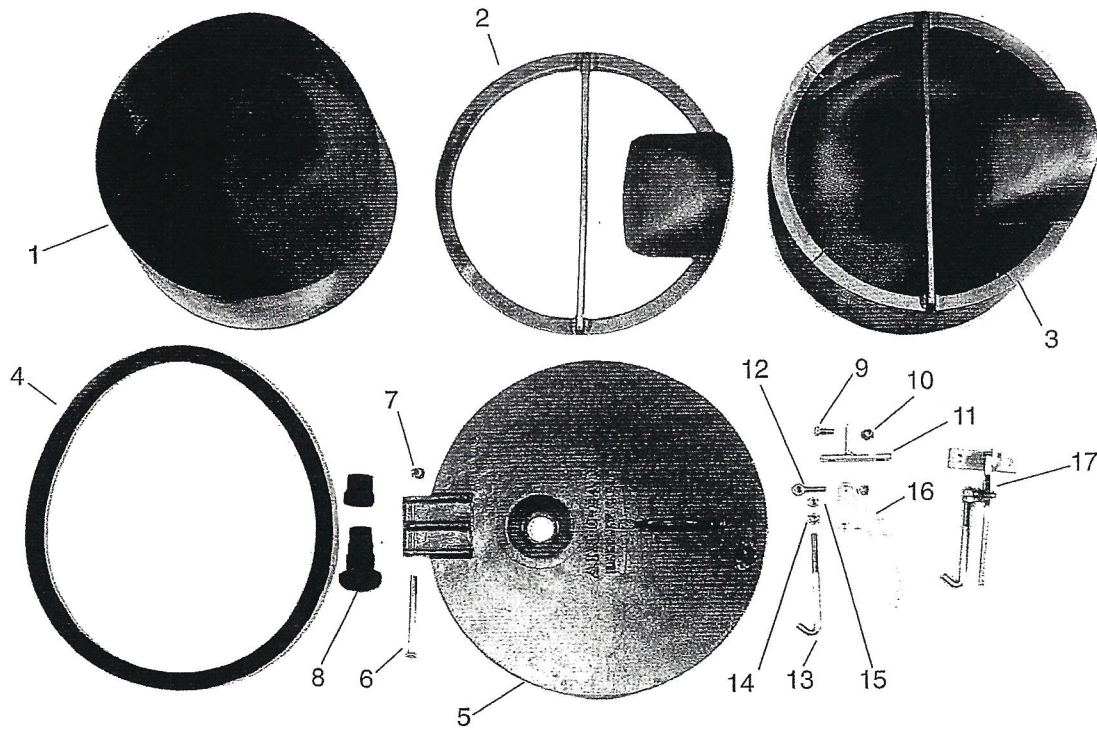
ITEM #	PART #	DESCRIPTION	QTY	ITEM #	PART #	DESCRIPTION	QTY
1	6180	REGULATOR BODY	1	11	6204	HANDLE O-RING	1
2	6181	ADJUSTMENT SCREW	1	12	6205	BOLT (8 X 1.25 X 20 MM)	2
3	6182	SPRING PLATE	1	13	6206	SPRING	1
4	6183	O-RING	1	14	6207	STEM	1
5	6184	PLUG	1	15	6208	O-RING	1
6	6185	REGULATOR BODY LOWER HALF	1	16	6209	RUBBER SEAL RING	1
7	6200	BRAGLIA REGULATOR	1	17	6210	VALVE	1
8	6201	BRASS HANDLE NUT	1	18	6211	STAINLESS STEEL SCREW	1
9	6202	HANDLE FLAT WASHER	2	19	6212	VALVE SEAT	1
10	6203	HANDLE	1				

SIZE 6/7 DRIVELINE WITH RUN DOWN CLUTCH



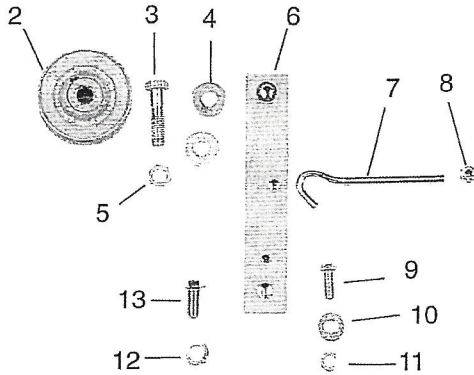
ITEM #	PART #	DESCRIPTION	QTY	ITEM #	PART #	DESCRIPTION	QTY
1	338020000	CIRCLIP	8	7	408000060	TAPERED PIN	2
2	348004000	GREASE ZERK	2	8	204066851	OUTER TUBE YOKE	1
3	41206	CROSS KIT	2	9	225211506	OUTER TUBE	1
4	341042000	ROLL PIN	1	10	225181506	INNER TUBE	1
5	34104300	ROLL PIN	1	11	204066852	INNER TUBE YOKE	1
6	509060361	YOKE	1	12	601206201	RA2/6 CLUTCH ASSEMBLY	1

FILL STRAINER & LID

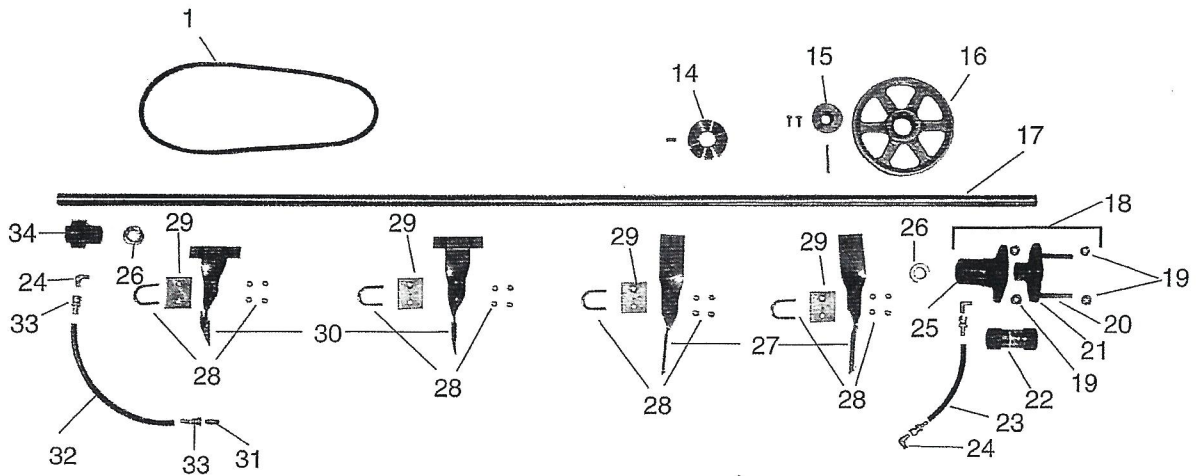


ITEM #	PART #	DESCRIPTION	QTY	ITEM #	PART #	DESCRIPTION	QTY
1	815	SCREEN ONLY, COARSE MESH	1	9	5910	5/16 X 3/4" PLATED CAP SCREW	1
	815A	SCREEN ONLY, FINE MESH	1		10	5911	5/16" PLATED HEX NUT
2	816	FRAME, BASKET	1	11		5912	LATCH LEVER BRACKET
3	811	FILL STRAINER BASKET COARSE MESH COMP.	1	12	5913	EYE BOLT	1
	811A	FILL STRAINER BASKET FINE MESH COMP.	1	13	4006	LID LATCH ROD	1
4	814B	LID GASKET	1	14	2252	3/8" JAM NUT	1
5	813	LID	1	15	2222	5/16" NUT	1
6	5908	3/8" X 4 1/2" PLATED CAP SCREW	1	16	4005	LATCH HANDLE	1
7	5907	3/8" NYLON LOCK NUT	1	17	4004	LATCH ASSEMBLY COMPLETE	1
8	5906	BREATHER, TANK	1				

AGITATOR ASSEMBLY



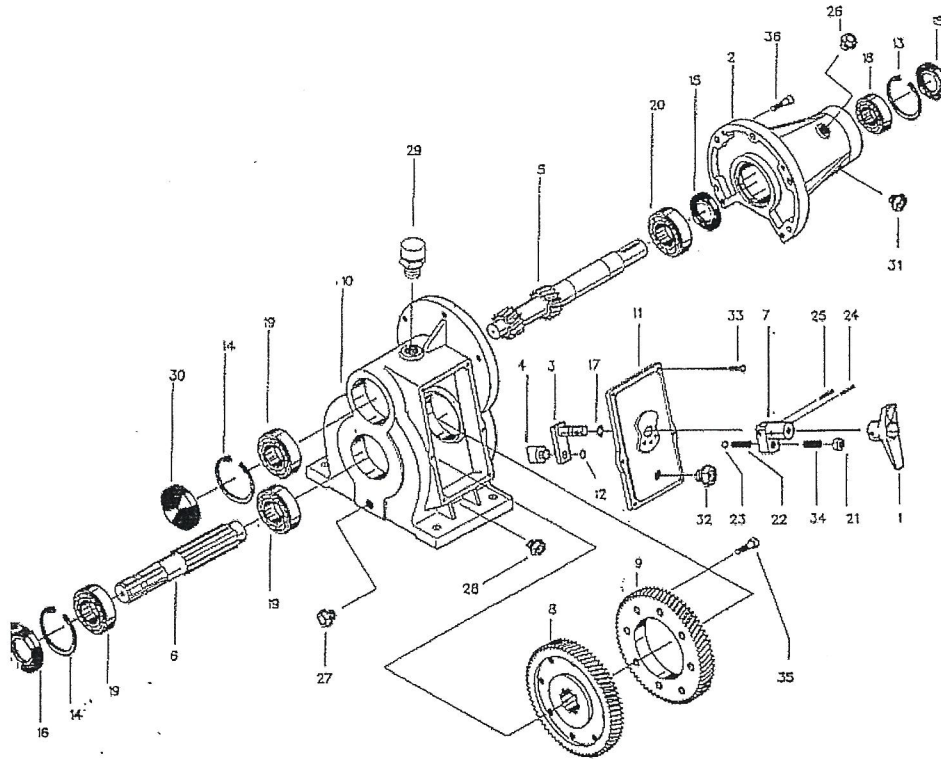
ITEM #	PART #	DESCRIPTION	QTY
1	5126	A43 BELT	1
2	5135	IDLER PULLEY (AG2321A)	1
3	2300	1/2' X 2" PLATED CAP SCREW	1
4	2290	1/2" PLATED FLAT WASHER	2
5	2293	1/2" PLATED NYLON LOCKNUT	1
6	5131	PIVOT BAR	1
7	5133	BELT TENSION HOOK BOLT	1
8	2253	3/8" PLATED NYLON LOCKNUT	1
9	2257	3/8" X 1 1/4" PLATED CAP SCREW	1
10	2250	3/8" PLATED FLAT WASHER	1
11	2251	3/8" PLATED LOCK WASHER	1
12	2291	1/2" PLATED LOCK WASHER	1
13	2296	1/2" X 1" PLATED CAP SCREW	1



ITEM #	PART #	DESCRIPTION	QTY
14	5165	AGITATOR SHEAVE (INCLUDES 1 SET SCREW)	1
15	7723	H X 1" BUSHING (INCLUDES 2 SET SCREWS)	1
16	5125	AK84H AGITATOR SHEAVE	1
17	5153	81" AGITATOR SHAFT (500 GAL STD. & REV.)	1
	7728	89 1/2" AGITATOR SHAFT (600 GAL STD.)	1
	5157	88" AGITATOR SHAFT (600 GAL. REV.)	1
18	1511A	PACKING GLAND ASSY.	1
19	2293	1/2" PLATED HEX NUT PACKING GLAND	4
20	2386	1/2" X 2 1/2" PLATED STUD	2
21	1547A	PACKING GLAND SLEEVE	1
22	1555	PACKING GLAND SEAL KIT	1

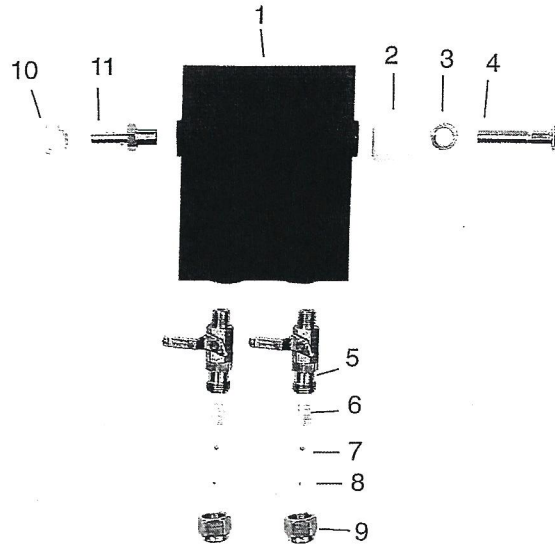
ITEM #	PART #	DESCRIPTION	QTY
23	5852	GREASE HOSE 1/4" X 10 3/4" RED	1
(option)	5180	3/16" X 10" STEEL BRAIDED GREASE LINE	2
24	7733	ELBOW FITTING BRASS (149F-4-2)	3
25	1511B	STUFFING BOX, PACKING GLAND	1
26	1552	1" SET COLLAR PLATED	2
27	5145	REAR AGITATOR PADDLE	2
28	5149	SS UBOLT W. WASHERS & NUTS	4
29	5146	AGITATOR PADDLE SPACER	4
30	5150	FRONT AGITATOR PADDLE	2
31	7734	STRAIGHT BRASS FITTING (48F-4-2)	1
32	5852	GREASE HOSE 1/4" X 12 1/2" RED.	1
33	5036	FITTING, BRASS (30682-4-4B)	4
34	1503A	AGITATOR GLAND, BRASS	1

BIMA M55 GEARBOX



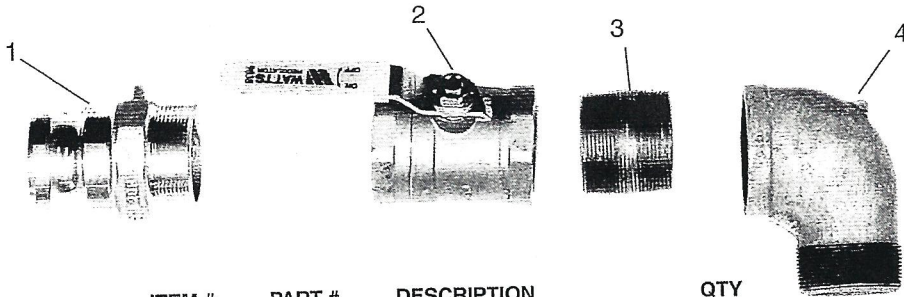
ITEM #	NEW #	OLD #	DESCRIPTION	QTY	ITEM #	NEW #	OLD #	DESCRIPTION	QTY
1	2022-005-032	M5562	HANDLE	1	19	8200-268-101	M5571, M5514	BEARING (308)	3
2	2025-003-301	M5519	EXTENSION HOUSING	1	20	8200-269-001	M5514	BEARING (7308)	1
3	2025-023-098	M5559	LEVER	1	21	8225-285-000	M5527	NUT	1
4	2025-026-042	M5565	FINGER	1	22	8375-160-000	M5525	SPRING	1
5	2025-069-542	M5555	POWER SHAFT	1	23	8525-200-000	M5524	BALL	1
6	2025-071-542	M5554	INPUT SHAFT	1	24	8575-289-000	M5560	PIN	1
7	2025-108-098	-----	LEVER	1	25	8575-335-000	-----	PIN	1
8	2025-117-426	M5566	GEAR	1	26	8600-136-000	M5518	SIGHT PLUG	1
9	2025-120-426	M5567	GEAR	1	27	8600-143-000	M5552	OIL PLUG	1
10	2025-121-101	M5556	GEAR HOUSING	1	28	8600-144-000	M5535	OIL PLUG	1
11	2025-144-201	M5564	SIDE PLATE	1	29	3730-180-000	M5557	OIL VENT CHECK VALVE	1
12	8025-162-000	-----	CIRCLIP	1	30	8600-850-000	-----	OIL SEAL CAP (90X12)	1
13	8025-580-000	M5521	CIRCLIP	1	31	8625-136-000	-----	OIL PLUG	1
14	8025-627-000	-----	CIRCLIP	2	32	8625-181-000	-----	OIL PLUG	1
15	8050-460-000	M5517, M5522	OIL SEAL (40X80X10)	2	33	8675-067-080	M5563	SCREW	6
16	8050-464-000	-----	OIL SEAL (40X90X10)	1	34	8675-279-000	-----	SCREW	1
17	8075-129-000	M5561	O-RING	1	35	8675-284-080	M5551	SCREW	8
18	8200-266-501	M5520	BEARING (2208)	1	36	8675-367-000	M5516	SCREW	5

VANE ASSEMBLY



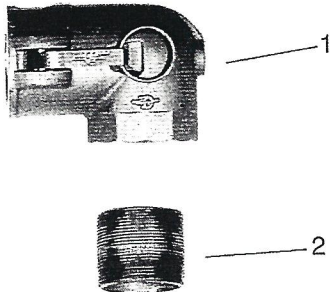
ITEM #	PART #	DESCRIPTION	QTY	ITEM #	PART #	DESCRIPTION	QTY
1	5759C	4 7/8" COMPOSITE VANE ON GB 2/32	18 16	7	7757-7760	CERAMIC CORE ON GB 2/32	36 32
2	5867	UHMW VANE SPACER ON GB 2/32	18 16	8	7763-7770	CERAMIC ORIFICE ON GB 2/32	36 32
3	2271	7/16" PLATED LOCK WASHER ON GB 2/32	18 16	9	7771	BRASS NOZZLE CAP (CP20230) ON GB 2/32	36 32
4	2279	7/16" X 2 1/4" PLATED CAP SCREW ON GB 2/32 7/16" X 1 1/2"	18 16	10	5763	VANE HOSE BARB COVER ON GB 2/32	18 16
5	5768	SPECIALTY BALL VALVE ON GB 2/32	36 32	11	5762	VANE HOSE BARB, 3/8" ON GB 2/32	18 16
6	5769	NOZZLE SCREEN (4514NY) ON GB 2/32	36 32				

2" FRONT FILL (OPTION) (LH FRONT OF TANK)



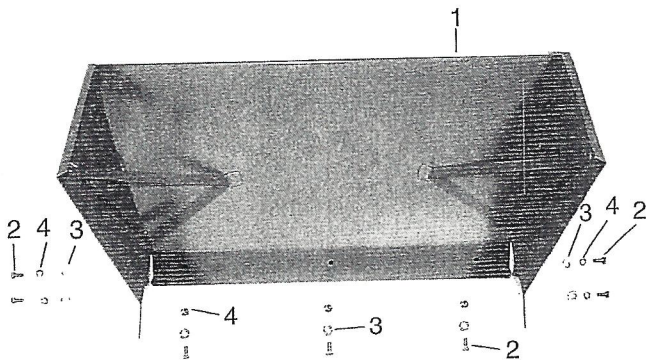
ITEM #	PART #	DESCRIPTION	QTY
1	1631	2" MALE CAM LOCK (20F ALUM)	1
2	7137	2" BRASS BALL VALVE	1
3	2682	2" X CLOSE GALV. PIPE NIPPLE	1
4	2679	2" 90° GALV. ST. EL.	1

2" FILL 90° CHECK VALVE (OPTION) (TOP OF TANK)



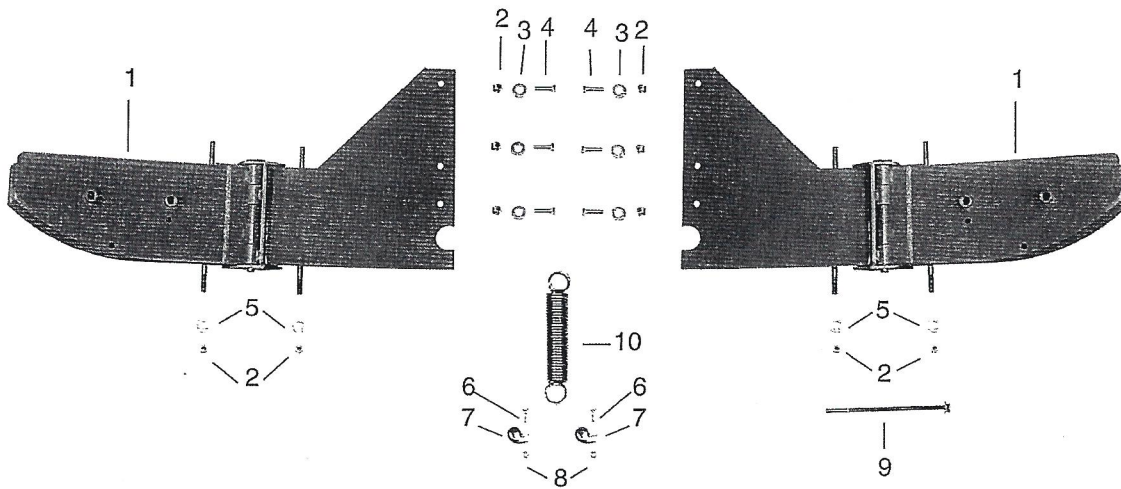
ITEM #	PART #	DESCRIPTION	QTY
1	1632	2" CHECK VALVE CAM LOCK (20G ALUM)	1
2	2682	2" X CLOSE GALV. PIPE NIPPLE	1

LEAF GUARD (OPTION)



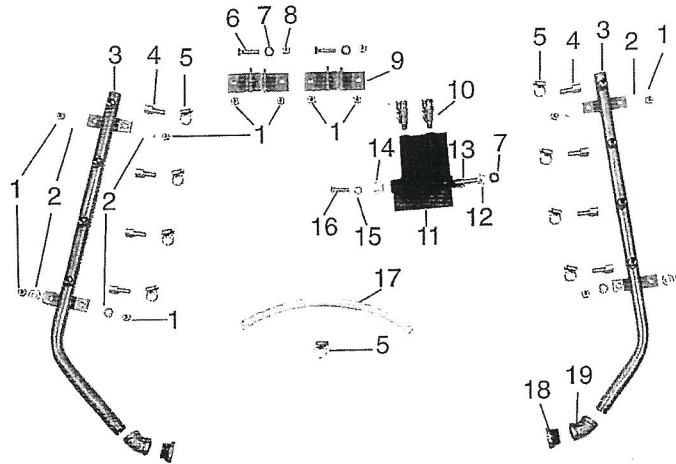
ITEM #	PART #	DESCRIPTION	QTY
1	6450	LEAF GUARD (SPECIFY MODEL)	1
2	2255	3/8" X 3/4" PLATED CAP SCREW	7
3	2251	3/8" PLATED LOCK WASHERS	7
4	2253	3/8" PLATED NYLOCK NUTS	7

STANDARD UPSPRAY (double swing)



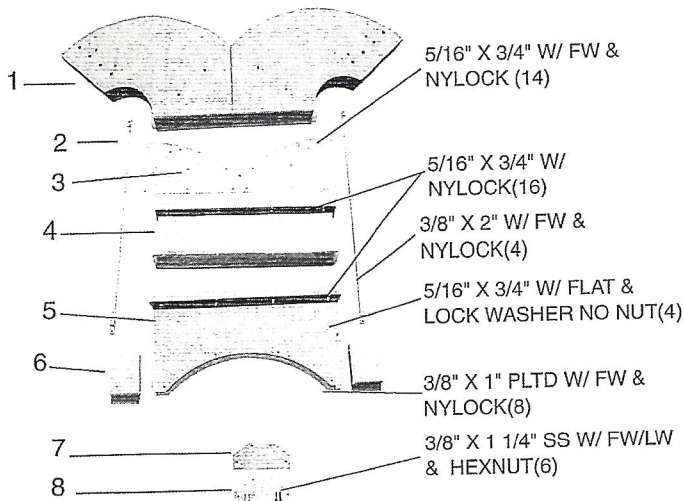
ITEM #	PART #	DESCRIPTION	QTY	ITEM #	PART #	DESCRIPTION	QTY
1	6401	LH UPSPRAY SHELL ONLY	1	6	2206	1/4" X 3/4" PLATED CAP SCREW	2
	6402	RH UPSPRAY SHELL ONLY (SPECIFY MODEL AND VINEYARD ROW WIDTH)	1		7	2485	3/4" RUBBER INS. CLAMP
2	2253	3/8" NYLON LOCKNUT PLATED	20	8	2203	1/4" PLATED NYLON LOCKNUT	8
3	2251	3/8" LOCK WASHER PLATED	12	9	6403A	1/2" x 7 1/4" HINGE PINS	4
4	2256	3/8" X 1" PLATED CAP SCREW	12		6405	UPSPRAY VOLUTE SPRING	4
5	2250	3/8" FLAT WASHER PLATED	8		6400A	COMPLETE SET OF UPSPRAYS WITH PLUMBING	1

SHORTSTACK TOWER PLUMBING



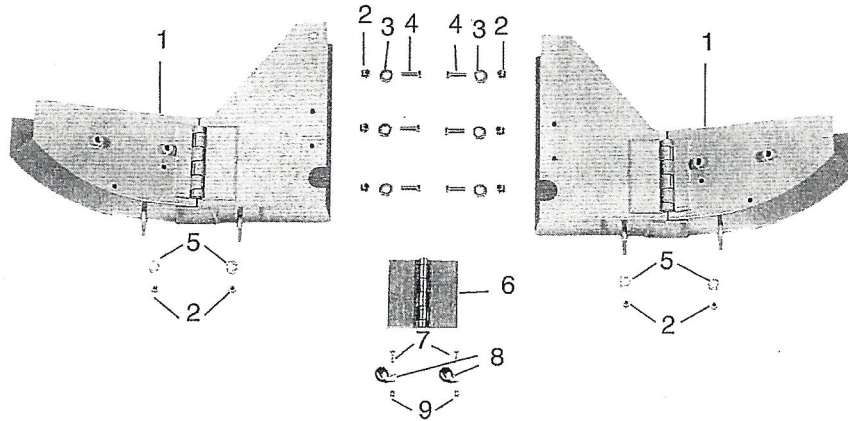
ITEM #	PART #	DESCRIPTION	QTY	ITEM #	PART #	DESCRIPTION	QTY
1	2203	1/4" PLATED NYLOCK NUT	12	12	5763	HOSE BARB COVER	8
2	2200	1/4" PLATED FLAT WASHER	8	13	5762	HOSE BARB, BN33	8
3	6433	SS TOWER MANIFOLD SET	1	14	5869	VANE SPACER	8
4	6299	HOSE BARB 3/8" HB X 1/4" FPT	8	15	2271	7/16" PLATED LOCK WASHER	8
5	2452	HOSE CLAMP #6	16	16	2278	7/16" X 1 1/4" PLATED CAP SCREW FOR 34R VANE	8
6	2260	3/8" X 2" PLATED CAP SCREW	2	16	2281	7/16" X 2" PLATED CAP SCREW FOR 36R VANE	8
7	2250	3/8" PLATED FLAT WASHER	10	17	5764	3/8" X 10" VANE HOSE	8
8	2253	3/8" PLATED NYLOCK NUT	2	18	2583	3/4" X 1/2" HEX BUSHING	2
9	6434	TOWER MANIFOLD MOUNTING BRACKET	4	19	2827	3/4" 45° SS ELBOW	2
10	5768	SPECIALTY VALVE	16				
11	5759D	SHORTSTACK COMPOSITE VANE 8					

SHORTSTACK HOUSING



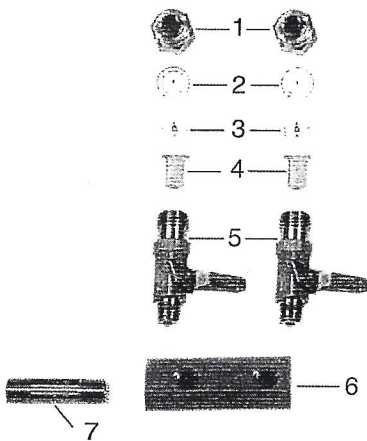
ITEM #	PART #	DESCRIPTION	QTY
1	6425	SHORT STACK TOWER TOP SECTION (SPECIFY MODEL)	1
2	6426	TOWER TOP POLES	2
3	6427	BUTTERFLY BACKING PLATE	1
4	6428	SHORTSTACK TOWER MIDDLE SECTION (SPECIFY MODEL)	1
5	6429	SHORTSTACK TOWER BOTTOM SECTION (SPECIFY MODEL)	1
6	6430	SHORTSTACK TOWER BOTTOM DOOR (SPECIFY MODEL)	2
7	6431	TOWER SADDLE GASKET	1
8	6432	TOWER SADDLE	1

STANDARD UPSPRAY (10 foot rows)



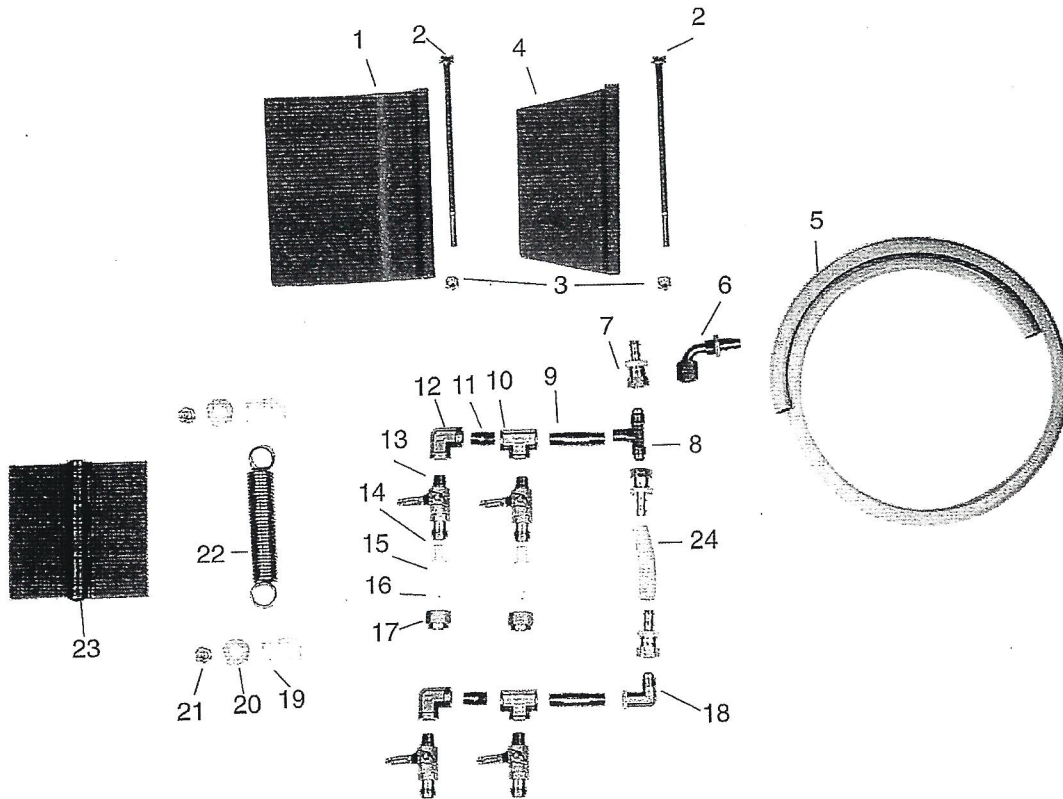
ITEM #	PART #	DESCRIPTION	QTY	ITEM #	PART #	DESCRIPTION	QTY
1	6401	LH UPSPRAY SHELL ONLY	1	5	2250	3/8" FLAT WASHER PLATED	8
	6402	RH UPSPRAY SHELL ONLY (SPECIFY MODEL AND VINEYARD ROW WIDTH)	1	6	6403	5" X 5" HINGE	2
2	2253	3/8" NYLON LOCKNUT PLATED	20	7	2206	1/4" X 3/4" PLATED CAP SCREW	2
3	2251	3/8" LOCK WASHER PLATED	12	8	2485	3/4" RUBBER INS. CLAMP	2
4	2256	3/8" X 1" PLATED CAP SCREW	12	9	2203	1/4" PLATED NYLON LOCKNUT	2
				6400		COMPLETE SET OF UPSPRAYS WITH PLUMBING	1

N.S. UPSPRAY MANIFOLD



ITEM #	PART #	DESCRIPTION	QTY
1	7771	BRASS NOZZLE CAP (CP20230)	8
2	7762-7770	CERAMIC ORIFICE	8
3	7757-7761	CERAMIC CORE	8
4	1703	NOZZLE SCREEN (4514NY)	8
5	5768	SPECIALTY BALL VALVE	8
6	6406	ALUMINUM UPSPRAY MANIFOLD	4
7	2788	1/4" X 2" STAINLESS STEEL PIPE NIPPLE	4

STANDARD UPSPRAY



ITEM #	PART #	DESCRIPTION	QTY	ITEM #	PART #	DESCRIPTION	QTY
1	6407	LARGE UPSPRAY DIRECTIONAL VANE (SPECIFY MODEL)	2	11	6304	1/4" BRASS PIPE NIPPLE (215PN4)	4
2	2242	5/16" X 7" PLATED CAP SCREW (GB 36)	4	12	6305	1/4" 90° BRASS ELBOW (1200P4-4)	4
	2241A	5/16" X 6 1/2" PLATED CAP SCREW (GB 34)	4	13	5768	SPECIALTY BALL VALVE	8
3	2223	5/16" PLATED NYLON LOCK NUT	4	14	5769	NOZZLE SCREEN (4514NY)	8
4	6408	SMALL UPSPRAY DIRECTIONAL VANE (SPECIFY MODEL)	2	15	7757-7760	CERAMIC CORE	8
5	6410	3/8" X 43" HOSE	2	16	7763-7770	CERAMIC ORIFICE	8
6	6301	3/8" 90° SWIVEL HOSE FITTING (37982-6-6B)	2	17	7771	BRASS NOZZLE CAP (CP20230)	8
7	7438	3/8" HOSE FITTING (30882-6-6B)	6	18	6306	90° BRASS FITTING (150F-6-4)	2
8	6302	BRASS TEE FITTING (145F-6-4)	2	19	6404	VOLUTE SPRING BUSHING (UHMW)	4
9	2788	1/4" X 2" STAINLESS STEEL PIPE NIPPLE	2	20	2250	3/8" PLATED FLAT WASHER	8
10	6303	1/4" BRASS TEE (1203P-4-4)	4	21	2253	3/8" PLATED NYLON LOCKNUT	8
				22	6405	UPSPRAY VOLUTE SPRING	4
				23	6403	UPSPRAY VOLUTE HINGE	2
				24	6411	3/8" X 6" HOSE	4

DECALS

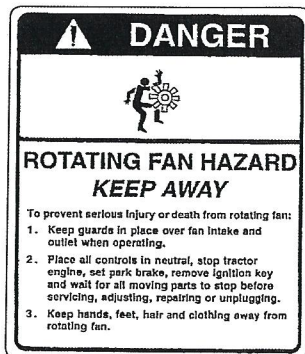
ITEM #	PART #	DESCRIPTION	QTY	ITEM #	PART #	DESCRIPTION	QTY
1	6030	DECAL, AIR-O-FAN	2	11	6050	DECAL, WARNING-KEEP FILTER CLEAN	1
2	6039	DECAL, DILUTE & CONCENTRATE	2	12	6036	DECAL, DANGER-ROTATING DRIVE LINE	1
3	6061	DECAL, TANK CALIBRATION	1	13	6054	DECAL, DANGER -TOXIC CHEMICAL HAZARD	1
4	6037	DECAL, DANGER-ROTATING FAN HAZARD	2	14	6044	DECAL, GB36	2
5	6048	DECAL, OPERATING INSTRUCTIONS	1	15	6043	DECAL, GB34	2
6	6033	DECAL, 500 GAL. SS	2	16	6045	DECAL, GB2-32	2
7	6035	DECAL, 600 GAL. SS	2	17	6044A	DECAL, GB36R	2
8	6062	DECAL, CAUTION INSTRUCTIONS	1	18	6043A	DECAL, GB34R	2
9	6038	DECAL, GREASE HERE	6				
10	6049	DECAL, REMOVE CONTROLS	1				



Item # 1

DILUTE & CONCENTRATE

Item # 2



Item # 4

OPERATING INSTRUCTIONS
PTO SPEEDS
540 RPM MAXIMUM

Item # 5

500 GAL-STAINLESS

Item # 6

600 GAL-STAINLESS

Item # 7

Item # 3

450

400

350

300

250

200

150

100

DECALS (Continued)

CAUTION

1. Read and understand Operator's Manual before using.
2. Read Chemical manufacturer's WARNINGS, instructions and procedures before starting and follow them exactly.
3. Place all controls in neutral, stop engine, set park brake, remove ignition key and wait for all moving parts to stop before servicing, adjusting, repairing or unplugging.
4. Always wear proper eye, breathing and clothing protection.
5. Stay away from chemicals and drift. Keep others away.
6. Install and secure all guards before starting.
7. Keep hands, feet, hair and clothing away from moving parts.
8. Do not allow riders.
9. Keep all chemicals and hydraulic lines, fittings and couplers tight and free of leaks before starting and operating.
10. Review safety instructions with all operators annually.

Item # 8

GREASE HERE

Item # 9

REMOVE CONTROLS FROM TRACTOR BEFORE UNHITCHING


Item # 10

WARNING

Filter Must Be Kept Clean To Prevent Damage To Pumps

Item # 11

DANGER



ROTATING DRIVE LINE
DEATH CAN RESULT FROM ENTANGLEMENT
KEEP PEOPLE AND CLOTHING WELL CLEAR

DO NOT OPERATE WITHOUT:

- DRIVE LINE GUARDS
- INPUT SHAFT GUARDS
- TRACTOR MASTER SHIELD
- U-JOINTS LOCKED TO TRACTOR AND IMPLEMENT SHAFTS

Item # 12

DANGER



TOXIC CHEMICAL HAZARD

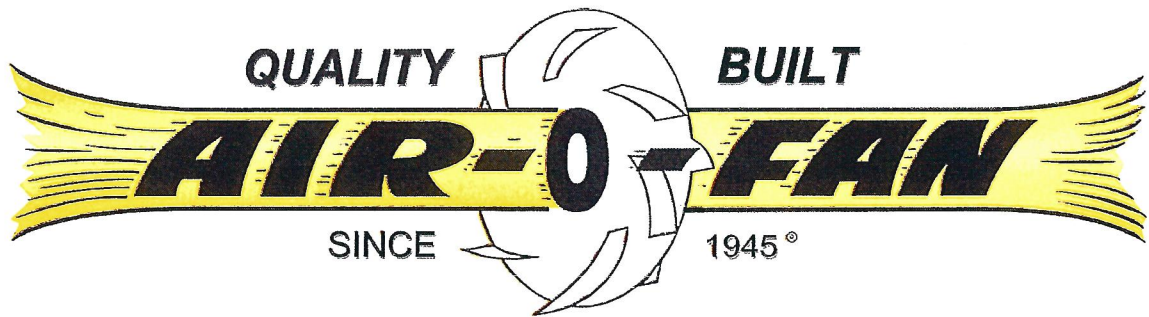
WEAR RUBBER GLOVES	WEAR APPROVED RESPIRATOR	DON'T INGEST CHEMICAL
--------------------	--------------------------	-----------------------

To prevent serious injury or death:

1. Do not allow chemical or solution to touch your skin. Wash skin immediately through the skin.
2. Wear rubber gloves and protective gear at all times.
3. Stay away from chemical splash and vapor. Keep others away.
4. Wear proper respirator when working with chemical.
5. Chemicals can be toxic. If in eyes or mouth, read chemical manufacturer's instructions and for low toxicity.
6. Seek medical attention immediately.
7. A poison control number is provided on the back cover of this response book.

Item # 13

NOTES



QUALITY

BUILT

AIR-O-FAN

SINCE

1945°

